

# OBJECTIVES



Enthusiastic and gratitude behavior of students helps to work in a team to accomplish the tasks easily.



To assist the development of graduates with balanced set of technical skills, interpersonal skills and with a positive attitude to life.



Students are trained in solving problems using scientific methodologies. This flexibility in the curriculum allow students to develop their interests.



Our students have participated in workshops, quiz competitions and many of our students are placed in reputed organization.

## EE

Placement Brochure for the session

2021-2022



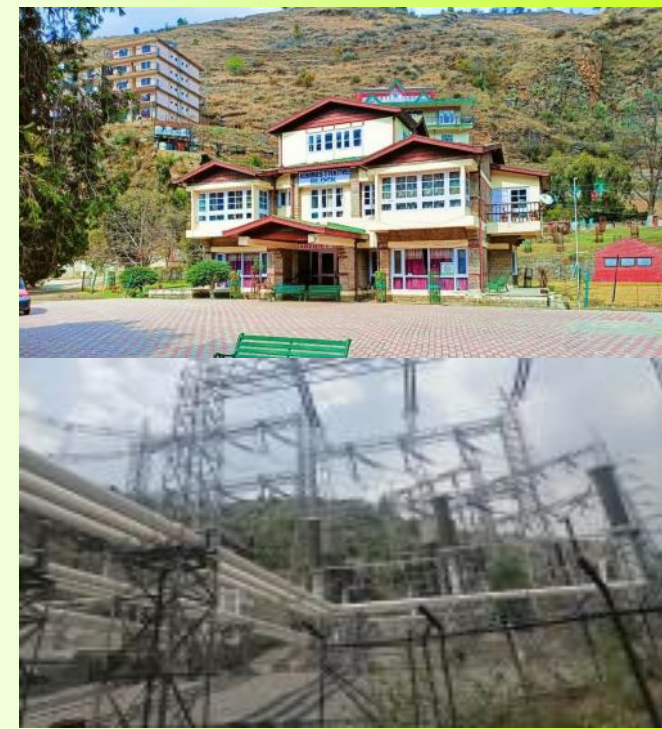
# ABVGIT

01783-253919

Tpo.abvgiet@gmail.com

director .abv@gmail.com

VPO :Gumma,Kotkhai .  
Shimla, HP



# 2022

# PLACEMENT

# BROCHURE

T& NP Cell is a platform for the Training and Placements of students and act as a window between the students and the outside organization.

## CONTACT US

1. Er Gaurav Mahajan

+91 70180 50740

+91 78074 85000

tpo.abvgiet@gmail.com

2. Er Saurav Mehta

+91 8894499270

mehta.saurav88@gmail.com

(EE Representative)

## REACH US

By Air : Airport near Shimla

77.5km from college

By Train : Kalka - Shimla railway

66km from college

By Road : 60km from Shimla,

on Shimla - Rohru NH



## ABOUT ABVG IET

ABVG IET Offer non - formal, flexible, modular, credit based Programme in engineering and technology and in the areas like Rural Development , Educational planning, Information and Management Science. To be a premier institution in technical education and research catering changing needs of the society. Collaborate with Industries, Institution and government organization for outreach activities, curriculum alignment , research and consultancy

ABVG IET offers different courses like CSE , ECE and EE for the students. College has well equipped separate labs for various fields such as :

Mat Lab

Data Structure Lab

Networking Lab

Conference Lab

Electrical Lab

Sports room etc.

**For More Visit: [abvgiet.ac.in](http://abvgiet.ac.in)**

## EE DEPARTMENT

The Department of Electrical Engineering is established in year 2019. The department of Electrical Engineering is a pioneering department . It provides a strong background in board area of Electrical Engineering, Communication Technology, Control Technology.

## T&P CELL

Students are well equipped to complete with highly competitive world of work and there abilities are well attested by the excellent reports and feedbacks we have received the reputed companies and business houses. This Institute provide latest information and guidance to the students for overall development of personality through Training & Placements Cell working effortlessly throughout the year. T & P Cell is well equipped with infrastructure to conduct placements sessions, excellent boarding and lodging arrangements to the organizations visiting the Institute for Placement activities.